

APPLICATIONS

- Stainless Steel Tumblers
- Stainless Steel Mugs
- Vacuum Insulated Mugs
- Ceramic Mugs
- Glass Tumblers



SPECIFICATIONS

Print System

- DOD piezo electric grayscale print heads
- Automatic voltage and temperature control
- UV-LED curing system with multiple UV lamp control
- Up to 5 print heads

Ink System

- UV curable ink
- Up to 7 ink channels, P + W + CMYK + V
- 1 L main ink tank for each color
- Automatic ink supply system
- Active negative pressure system

RIP and User Interface

- ColorPRINT Bottle RIP software

- 10" Color Touch Screen LCD Display Panel
- Printer Control Software (PCS)

Printable Size

- Feeding direction (R-axis): 280° of the mug
- Printing length (Y-axis): within 360 mm (14.17")
- Printing area: from the bottom of the mug to the top

Media Type

- White/ black/ colored tapered mugs or cylindrical mugs
- Ceramics, metal, paper, plastic, wood, glass

Connectivity

- Gigabit Ethernet interface

Formats

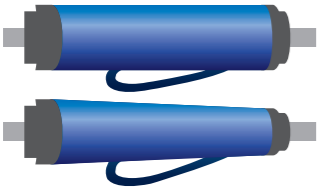




- Popular desktop file formats, including JPEG, TIFF, PDF, EPS and DCS

Operational Environment

- Temperature: 16-28°C (61-82°F)
- Humidity: 40-70% (Recommended)
- Altitude: up to 1000 m (3281 ft)
- Electrical: single phase 220V±10% (50/60 Hz, AC); 7.5 A; 1650 W

Printer Dimensions (W × D × H)

1560 mm × 832 mm × 1830 mm
(61.4" × 32.8" × 72.0")

Fixture Type	Printed Object Diameter (D) & Width (W)	Printed Object Length	Shape	Print Productivity (Unit: mugs/ hr.) P + W + CMYK + V	
				600 x 900 DPI	900 x 1200 DPI
 Print 1 mug at a time		Within 360 mm (14.17")	Cylindrical mugs & Tapered mugs (Max. Angle: 4°)	12	6
 Print 2 mugs at a time		105 -160 mm (4.13" - 6.3")	Cylindrical mugs	24	12
 Print 3 mugs at a time	D = Mug Diameter: 65 -130 mm (2.56" - 5.12") W = Mug Radius + Handle Width: Within 90 mm (3.54")	75 -105 mm (2.95" - 4.13")	Cylindrical mugs	38	19
 Print 4 mugs at a time		55 -75 mm (2.17" - 2.95")	Cylindrical mugs	48	24

* Print Productivity includes loading, printing, curing and unloading time. It will vary depending on print resolution, color modes, image size, etc.,



Amica Technology

E-mail: info@amicatechnology.eu

The information contained herein is subject to change without notice. All terms and product names may be trademarks or registered trademarks of their respective owners, and are hereby acknowledged.

©2001-2023 Amica Technology All rights reserved.

2309 - c0405



www.amicatechnology.eu



3sixty

TBM UV INKJET PRINTER

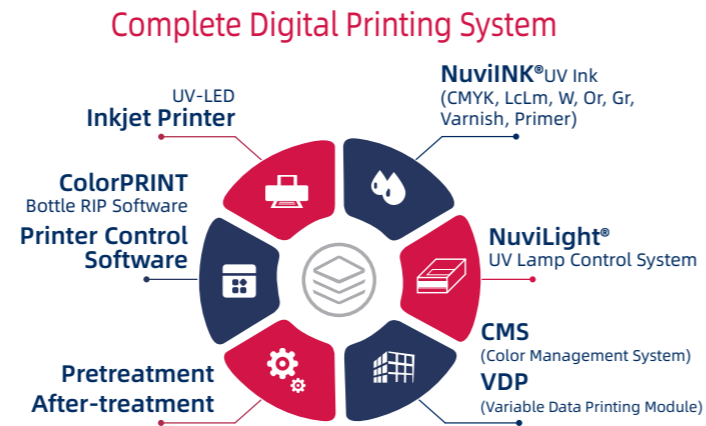
Print directly on cylindrical or tapered mugs



Innovative Digital Production Method and Printing Technologies for Mugs

TBM is designed specifically for the decoration of various types of mugs, including tapered and cylindrical mugs. Dedicated UV ink and varnish, as well as various pretreatment methods, ensure that the TBM printer is suitable for a wide range of materials, including ceramics, metals, paper, plastics, wood, glass, etc.

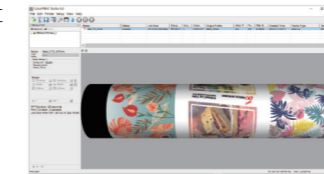
Compared with traditional methods, TBM greatly reduces the production process and saves time. Thanks to our excellent UV inkjet technology, TBM has the ability to decorate mugs with more complex, vivid, and detailed images compared to other digital technologies. TBM is the best choice for personalized printing, customized printing, and short-run printing for various types of mugs.



Professional Software for Mug Printing

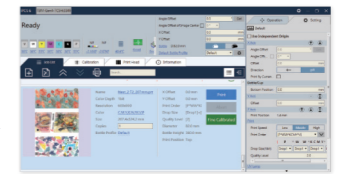
ColorPRINT Bottle RIP Software

- Intuitive main interface with 2D/ 3D preview
- Basic parameters can be set in one view
- Object template to define print locations
- ICC color management
- Spot Color
- Automatic white ink background choke
- Variable data printing



Printer Control Software (PCS)

- Sends job control commands to print, abort, pause, resume and reset
- Displays real-time status information of the printer and job
- Z-axis height control, Horizontal calibration
- Check nozzle circular
- White ink circulation control
- Multiple UV lamp control



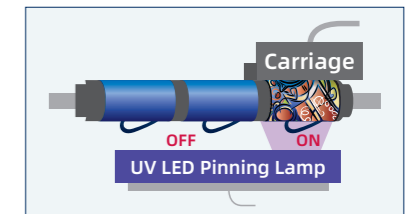
Proprietary UV Curing Control Technology

Segmented UV curing control

The irradiation area of the UV lamp is divided into several segments, and each segment can be individually controlled for activation to achieve maximum print productivity and optimal print quality.

Final curing plus pinning

UV-LED pinning "freezes" ink droplets to control dot gain before overlaying follow-up colors for optimal printing quality. All pinned inks will finally pass underneath a final cure UV LED lamp. Pinning and final curing can be automatically switched.



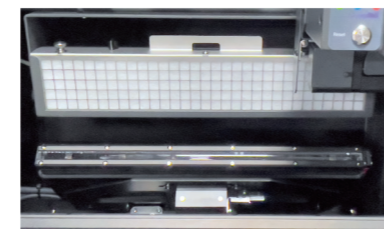
FEATURES

Printable Size

- Feeding direction (R-axis): 280° of the mug
- Printing length (Y-axis): within 360 mm (14.17")
- Printing area: from the bottom of the mug to the top

Please refer to the data sheet on the back cover for the sizes of printed objects.

The **Exhaust & Filtration System** removes and filters floating ink particles in the printing area to offer an environmentally friendly operating area and high-quality prints.



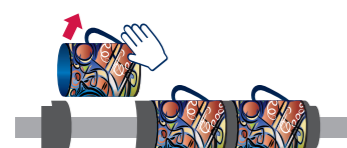
By monitoring the printing status of the printhead in real-time, the **Automatic Print Head Protection System** can prevent the printhead from being scratched or exposed to UV light during printing.

Flexible Fixture Design and Operation Process

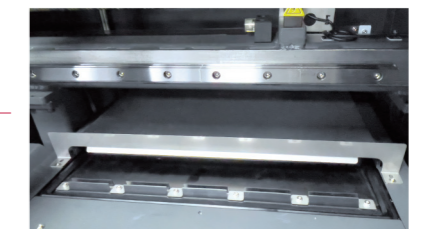
Loading time:
10 ~15 sec. per 3 mugs onto the fixture



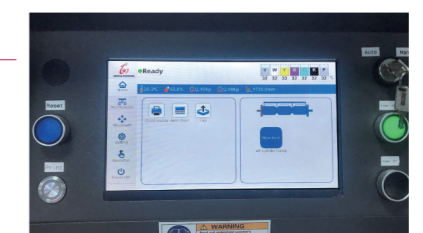
Unloading time:
10 ~15 sec. per 3 mugs from the fixture



- One printer comes with two sets of clamping fixtures as standard. Two sets of fixtures are used alternately for printing, loading and unloading, thereby eliminating waiting time.
- Each set of fixture can hold one to four mugs, which will be printed as one print job. Each fixture is equipped with a pneumatic pressure clamp that keep each mugs aligned, and coaxially clamp into place.
- The fixture supports mugs of different diameters and lengths.



Based on an all-in-one design concept, the small and compact **Print Head Maintenance Module** allows automatic purging, wiping and capping for convenient unattended operation.



The simple and intuitive **10" Color LCD Touch Screen** provides loading & unloading control, printhead maintenance, and real-time printing parameter settings.